



MERCURY GLASS

INSIGHT

NEWSLETTER

NEWSLETTER HIGHLIGHTS:

NEW FACTORY



CNC PROCESSING



FEATURE PRODUCT



RECENT PROJECT



OPERATIONS DURING COVID-19

Dear Customer - We're still here for you.

During this uncertain time our team will continue to be available to service all your glass needs. Our production facilities are operational and there has been no changes to our capabilities, leadtimes and delivery schedules.

However, with the outbreak of COVID-19 we want to reassure you that we are taking all precautionary measures to help protect you and to minimize the risk of further spread.

During this time our operating procedures and instructions may change so please read the notices posted on the office door before entering.

Whilst on the Mercury Glass premises please adhere to all social distancing measures, including keeping 1.5m distance from our employees and other customers.

Customer Pick-ups

All customers picking up orders directly from Mercury Glass factories must report to the office, the customer service team will assist you with your order, ensuring it is brought to your vehicle ready for loading.

NOTE: Only Mercury Glass employees are allowed into the factory area. Non-employees are strictly prohibited from entry unless they are given permission by management or are accompanied by a Mercury Glass employee.

THANK YOU FOR YOUR UNDERSTANDING AND ONGOING SUPPORT



NEW FACTORY - 391 BRADMAN STREET, ACACIA RIDGE

Mercury Glass are pleased to announce that all manufacturing has now been relocated to our new larger factory at
391 Bradman Street, Acacia Ridge.

Our old facilities at 38 Lysaght Street and 280 Bradman Street, Acacia Ridge have now been vacated.

Our contact details remain the same:

PHONE: 07 3423 7400

FAX: 07 3423 7199

EMAIL: info@mercuryglass.com.au

WEBSITE: www.mercuryglass.com.au

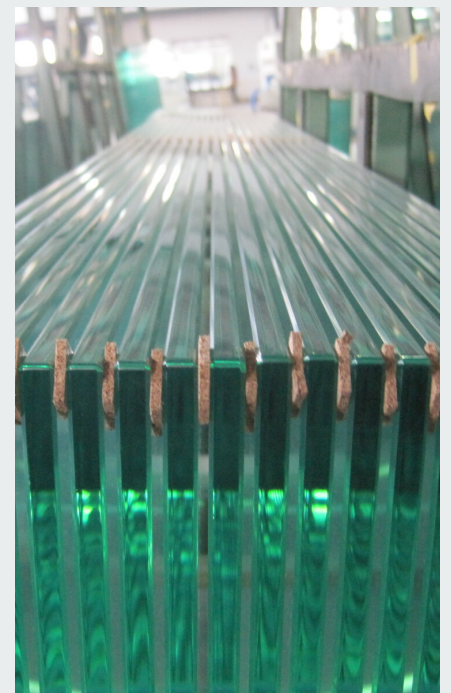
We have investment in new glass processing equipment and a new furnace technology, extending our range and capabilities. This ensures we continually supply you with highest level of product quality for your projects.

PROCESSING ALL YOUR GLASS REQUIREMENTS

- Blocks / end caps and sheet stock
- CTS - Float, laminate, silver
- Toughened - 4 mm to 19 mm
- Heat soaking
- Painting
- CNC and Waterjet Processing
- Project and stock glass Imports from our overseas operations

LEADTIMES

Whilst standard leadtimes are in place, we are always flexible and will strive to achieve the result you need - just ask our friendly customer service team.





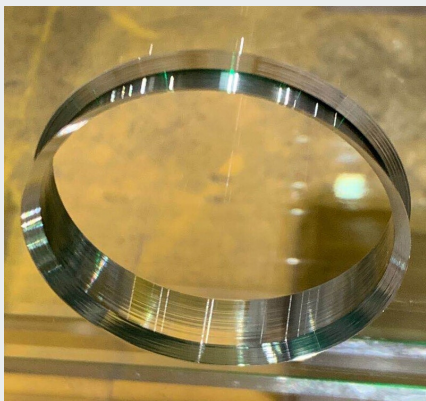
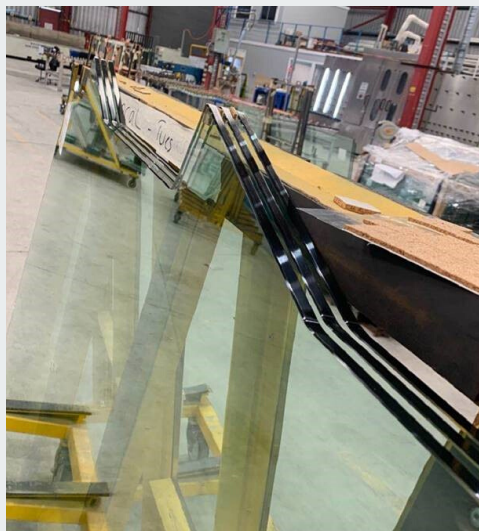
CNC PROCESSING

PRECISION CNC GLASS MACHINING

Mercury Glass is at the forefront of tight tolerance, high and low volume CNC glass processing.

Our CNC machining centre is capable of a myriad of possibilities, limited only by the designer's imagination.

Un-rivalled capabilities, no matter the job, we can handle it.



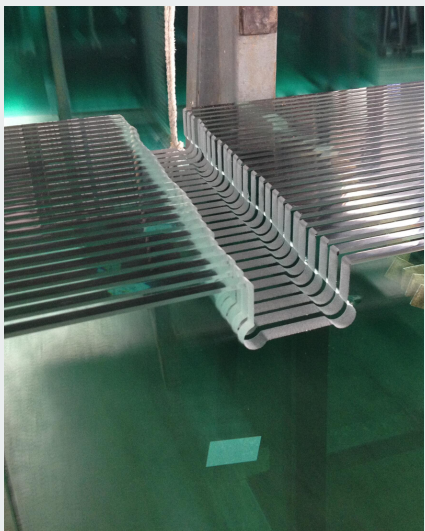
CNC MACHINE

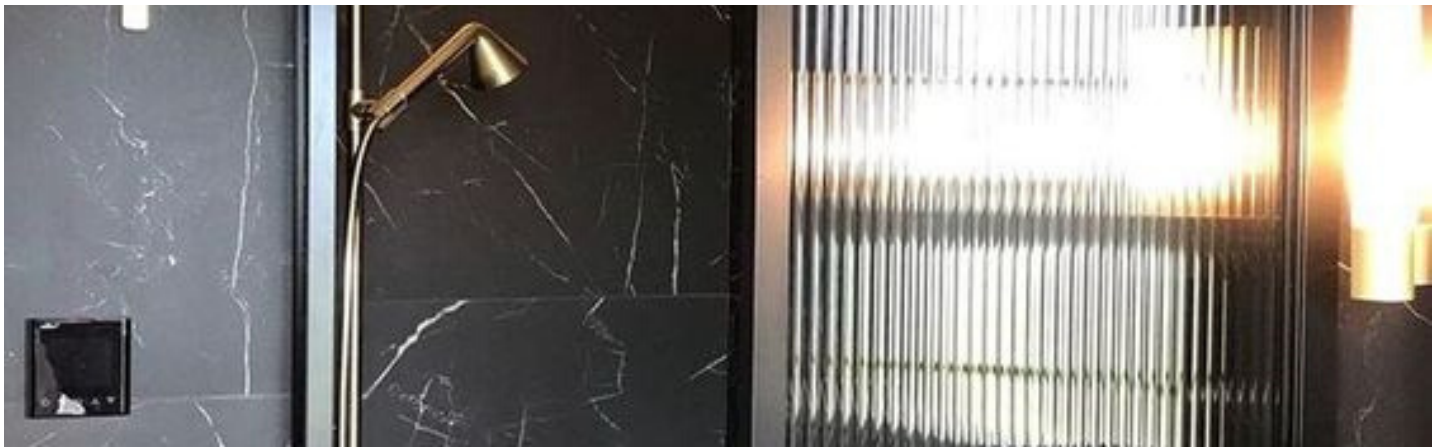
Our CNC machine is a state of the art Intermac 33 processing work centre, with the following processing capabilities.

Glass Thickness:
4 mm - 19 mm

Maximum Size:
3600 mm x 1800 mm

CALL US NOW
07 3423 7400



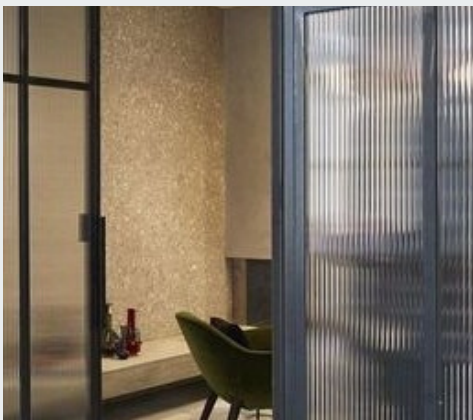


FEATURE PRODUCT

NARROW REEDED

Narrow Reeded Glass is a patterned semi-obscure glass design that can be tempered if necessary. It has many parallel bands running through the glass that diffuses light.

This is an excellent semi-private background glass and mixes well with other glasses used in contemporary interior fit outs designs, including hotels, restaurants, shops, offices and the home.



Available Thicknesses:
6mm and 10 mm

Sheet Size:
1830mm x 2440mm

Pattern runs vertically along the 2440



- PRIVACY SCREENING**
- OFFICE PARTITIONS**
- SHOWER SCREENS**
- CABINETRY**
- BALUSTRADE INFILLS**



CALL US NOW TO DISCUSS YOUR PROJECT
07 3423 7400



RECENT PROJECT

MARINE PARADE

Marine Parade is a distinctive multipurpose tower located at the eastern entrance to the Gold Coast in the emerging Southport Central CBD Precinct.

The unusual design has created great interest with the top section appearing larger than the bottom and the building's exterior is a mix of blue glass and green walls, with plants growing vertically on the outside.

Mercury Glass was successful in supplying glass for windows and doors to the 236 residential apartments which are housed in the top tier. In addition to this we supplied a variety of products to the bottom tier commercial premises, that included shops and offices.

PRODUCTS USED INCLUDED:

- Blue Laminate
- Blue Translucent Laminate
- Grey Laminate
- Acoustic Laminates
- Painted Glass
- Toughened Glass



CALL US NOW TO DISCUSS YOUR PROJECT - [07 3423 7400](tel:0734237400)